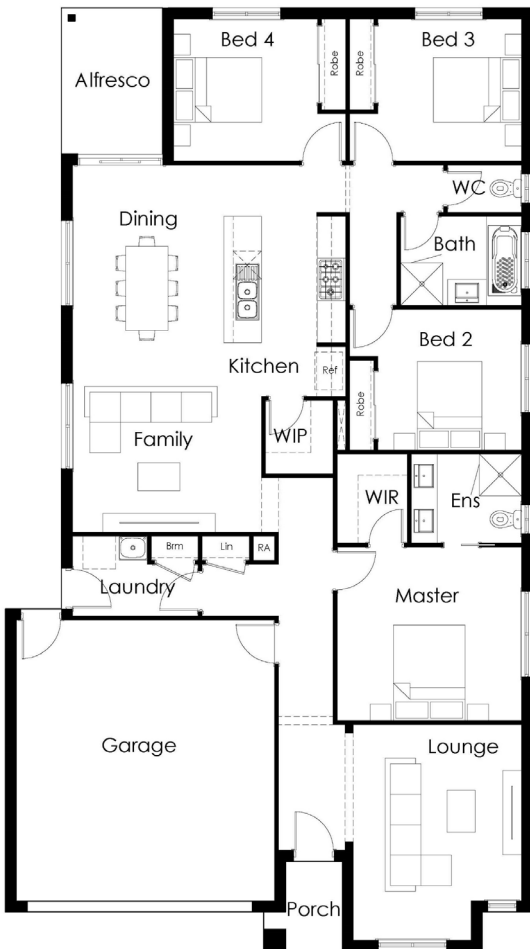




**Orchard Green Estate - Melton**  
**Lot 403 - 359m<sup>2</sup>**

 4
  2
  2
  2
  12.5m



# \$422,656

## Tambo 22

Home Size: 22sq / 206m<sup>2</sup>

### LAND TITLING SOON! TAKE ADVANTAGE OF GOVERNMENT INCENTIVES!

- » Generous site costs
- » Engineer designed slab
- » 20mm stone benchtops in kitchen
- » LED downlights throughout
- » 2440mm ceiling height
- » Designer appliances
- » Ducted heating
- » Tiled shower base
- » Carpet/Tile floor coverings throughout
- » Flyscreens to all openable windows
- » 25 year structural guarantee
- » 6 months maintenance
- » 6 star energy rating

**Disclaimer:** Highmark Homes reserves the right to amend specifications and prices without notice. All plans and facades are indicative conceptions and are not intended to be an actual depiction of the building, fencing, paths, driveways or landscaping and are not necessarily to scale. All dimensions are approximate, refer to contract documentations for details. Working drawings take precedence over brochure. Subject to DA & STCA