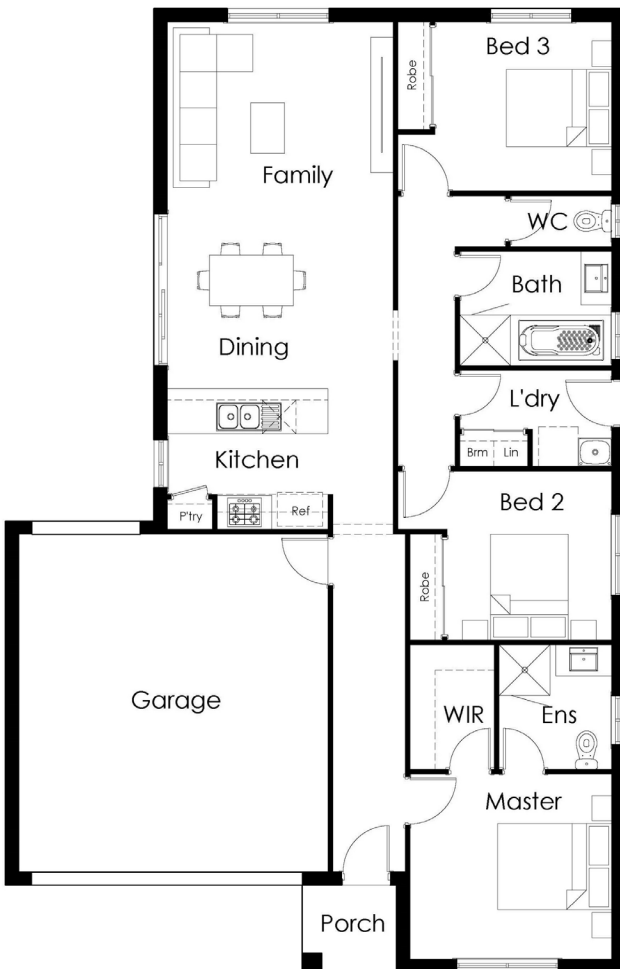




Winter Valley Rise - Winterfield
 Lot 272, Sandpiper Ave - 399m²

 3
  1
  2
  2
  12.5m



\$365,906*

Grovedale 17

Home Size: 17sq / 156m²

TITLED LAND! TAKE ADVANTAGE OF GOVERNMENT INCENTIVES!

- » Generous site costs
- » Engineer designed slab
- » 20mm stone benchtops in kitchen
- » LED downlights throughout
- » 2440mm ceiling height
- » Designer appliances
- » Ducted heating
- » Tiled shower base
- » Carpet/Tile floor coverings throughout
- » Flyscreens to all openable windows
- » 25 year structural guarantee
- » 6 months maintenance
- » 6 star energy rating

**Take the next step.
 Enquire now.**